



Flow

# The Eliminator



Ultrahigh-Pressure  
Waterjet Technology

Paint, rubber and coating removal  
on highways, airports and parking garages.

# Advantages of the Eliminator



Contractor rugged, single-operator robot

The Eliminator is a compact, maneuverable stripping robot with 360 degree unrestricted visibility for its single operator.

Cleaning head flexibility



The Eliminator, a true contractor-friendly system, features forward and reverse cleaning, allowing for easy removal of all pavement markings: long lines, chevrons, diagonals, arrows, and other short radius obstacles. Its versatility and compact size enable work in low overhead areas, parking garages and on other membrane-removal projects. The HUSKY® pump and handtool accessories separate easily from the Eliminator system for use with other cleaning or cutting operations.

- Improves motorist safety
- No ghost lines or grooves
- No damage to road surfaces
- Unique nozzle attack patterns
- Highly maneuverable and productive
- High road clearance
- FHWA and DOT approved

Clear operator vision



The Eliminator reduces Maintenance of Traffic (MOT) costs for the DOT's through speed, complete paint removal and elimination of ghost stripes.



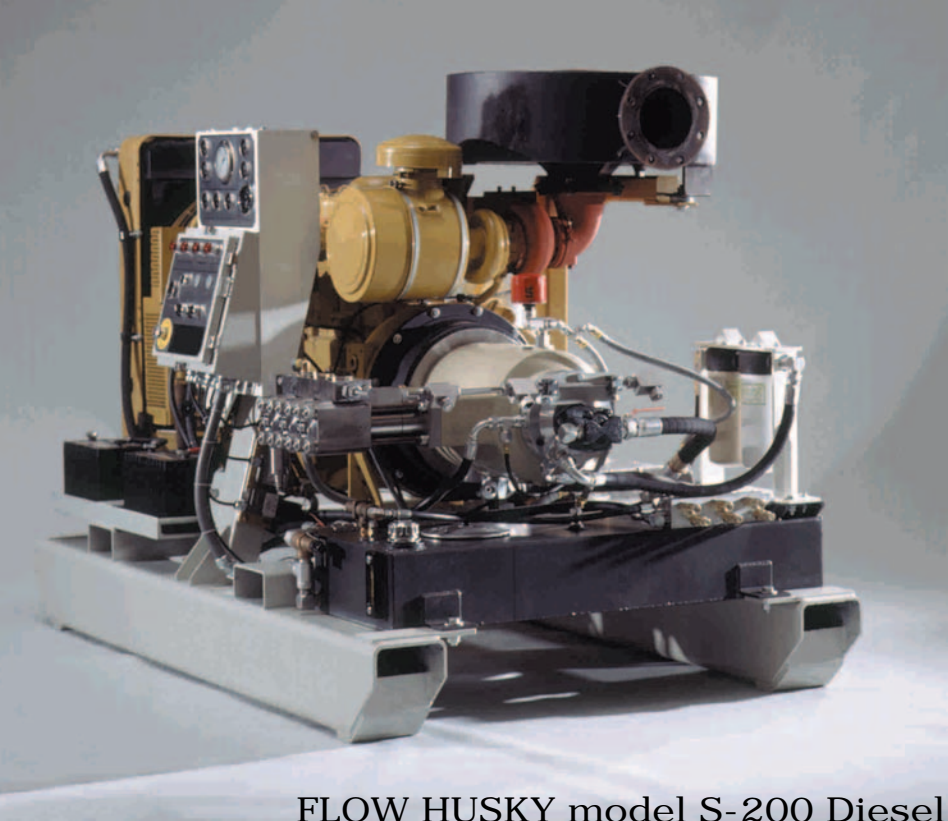
Clean removal—no grooves



With the Eliminator, paint and thermoplastic are completely removed from pavement crevices and pockets without roadway surface damage. The Eliminator removes ghost lines and confusing markings dramatically improving motorist safety. Flow International Corporation's (FLOW) industry standard HUSKY pump and exclusive floating head design give the Eliminator a clear advantage over competing systems.

Exclusive floating head design





FLOW HUSKY model S-200 Diesel

The HUSKY pump is the industry standard for portable ultrahigh-pressure (UHP) surface preparation and cleaning. It is the most reliable pump on the market capable of delivering 40,000 psi and flow rates up to 6.5 gpm. The HUSKY can drive single or multiple tools with equal pressure and uninterrupted flow.

## Pump/Accessories

FLOW HUSKY model S-200 Diesel  
40,000 psi, 6.5 gpm UHP water  
Caterpillar 205 hp  
100 gallon fuel tank  
Tandem axle trailer  
1,000 gallon water tank  
A-3000 handheld jet lance  
150 feet, 3/10 in. UHP hose  
Spare parts kit  
Training manuals and videos  
On site start up school

## Robot

Toro hydrostatic custom robot  
Kubota 49 hp diesel engine  
Hydraulic UHP FLOW swivel— 1,800 - 2,700 rpm  
Cleaning head options—9 in., 19 in., 27 in.  
Vernier control package  
Safety beacon  
Back-up alarm  
Halogen lights  
Roll bar  
Remote high/low controls  
Spare parts kit

For a free demonstration, or for more information contact:

Your Local Representative

Flow International Corporation  
23500 64th Avenue South  
Kent, Washington 98032 USA  
Tel: 253-850-3500 • Fax: 253-813-3285  
TOLL-FREE 800-446-3569  
[www.flowcorp.com](http://www.flowcorp.com)



Flow

© 2001 Flow International Corporation. All Rights Reserved. Printed in the USA on Recycled Paper. FIC-MSC011 (02/01)  
Specifications and depictions are correct at time of printing. FLOW reserves the right to change specifications and designs in order to enhance product performance or make design improvements.